

**BALDOR • RELIANCE**

---

# Customer information packet

## VJPFPM2547T-5

60HP, 1770RPM, 3PH, 60HZ, 364JP, 4252M, OPSB, F

## Specifications

Enclosure	OPSB
Frame	364JP
Frame Material	Steel
Frequency	60.00 Hz
Motor Letter Type	Three Phase
Output @ Frequency	60.000 HP @ 60 HZ
Phase	3
Synchronous Speed @ Frequency	1800 RPM @ 60 HZ
Voltage @ Frequency	575.0 V @ 60 HZ
Agency Approvals	CSA EEV UL
Ambient Temperature	40 °C
Auxillary Box	No Auxillary Box
Auxillary Box Lead Termination	None
Base Indicator	No Mounting
Bearing Grease Type	Polyrex EM (-20F +300F)
Blower	None
Current @ Voltage	57.000 A @ 575.0 V
Design Code	B
Drip Cover	Drip Cover
Duty Rating	CONT
Efficiency @ 100% Load	93.6 %
Electrically Isolated Bearing	Not Electrically Isolated
Feedback Device	NO FEEDBACK
Front Face Code	Standard
Front Shaft Indicator	None
Heater Indicator	No Heater
High Voltage Full Load Amps	57.0 a
Insulation Class	F
Inverter Code	Not Inverter
KVA Code	F
Lifting Lugs	Vertical Lifting Lugs

## Part detail

Revision	G
Type	AC
Mech. spec.	42E338
Base	
Status	PRD/A
Elec. spec.	42WGX102
Layout	42LYE338
Eff. date	01-11-2022
CD Diagram	CD0382
Poles	04
Leads	6#8
Proprietary	False
Created date	07-22-2016

<b>Locked Bearing Indicator</b>	Locked Bearing
<b>Motor Lead Exit</b>	Ko Box
<b>Motor Lead Quantity/Wire Size</b>	6 @ 8 AWG
<b>Motor Lead Termination</b>	Flying Leads
<b>Motor Standards</b>	NEMA
<b>Motor Type</b>	4252M
<b>Mounting Arrangement</b>	F1
<b>Number of Poles</b>	4
<b>Overall Length</b>	32.50 IN
<b>Power Factor</b>	84
<b>Product Family</b>	Fire Pump Motor
<b>Pulley End Bearing Type</b>	Ball
<b>Pulley Face Code</b>	C-Face
<b>Pulley Shaft Indicator</b>	Tapped & Key
<b>Rodent Screen</b>	Included
<b>Service Factor</b>	1.15
<b>Shaft Diameter</b>	1.577 IN
<b>Shaft Extension Location</b>	Pulley End
<b>Shaft Ground Indicator</b>	No Shaft Grounding
<b>Shaft Rotation</b>	Reversible
<b>Shaft Slinger Indicator</b>	Shaft Slinger
<b>Speed</b>	1770 rpm
<b>Speed Code</b>	Single Speed
<b>Starting Method</b>	Wye Start - Delta Run
<b>Thermal Device - Bearing</b>	None
<b>Thermal Device - Winding</b>	None
<b>Vibration Sensor Indicator</b>	No Vibration Sensor
<b>Winding Thermal 1</b>	None
<b>Winding Thermal 2</b>	None

**Nameplate**

**NP3454L**

<b>CAT.NO.</b>	VJPFPM2547T-5	<b>CUST P/N</b>		<b>I.P.</b>	23
<b>SPEC.</b>	42E338X102H2	<b>SER.NO.</b>		<b>FRAME</b>	364JP
<b>HZ</b>	60	<b>HP</b>	60	<b>RPM</b>	1770
<b>VOLTS</b>	575	<b>CODE</b>	F	<b>VOLTS</b>	
<b>AMPS</b>	57	<b>DES</b>	B	<b>AMPS</b>	
<b>EFF</b>	93.6	<b>SER.F.</b>	1.15	<b>PF</b>	84
<b>RATING</b>	40C AMB-CONT	<b>DE BRG</b>	6313	<b>GREASE</b>	POLYREX EM
<b>BLANK</b>		<b>ODE BRG</b>	6311	<b>MTR. WT.</b>	475
		<b>CLASS</b>	F	<b>PH</b>	3
		<b>ENCL</b>	OPSB	<b>CC</b>	010A
<b>HTR-VOLTS</b>		<b>HTR-AMPS</b>		<b>HTR-WATTS</b>	

**AC Induction Motor Performance Data**

Record # 58310

Typical performance - not guaranteed values

<b>Winding:</b> 42WGX102-R001		<b>Type:</b> 4252M		<b>Enclosure:</b> OPSB	
<b>Nameplate Data</b>			<b>575 V, 60 Hz: Single Voltage Motor</b>		
<b>Rated Output (HP)</b>	60	<b>Full Load Torque</b>	178 LB-FT		
<b>Volts</b>	575	<b>Start Configuration</b>	direct on line		
<b>Full Load Amps</b>	57	<b>Breakdown Torque</b>	488 LB-FT		
<b>R.P.M.</b>	1770	<b>Pull-up Torque</b>	221 LB-FT		
<b>Hz</b>	60	<b>Locked-rotor Torque</b>	297 LB-FT		
<b>NEMA Design Code</b>	<b>Phase</b> 3	<b>Starting Current</b>	323 A		
<b>Service Factor (S.F.)</b>	<b>B KVA Code</b> F	<b>No-load Current</b>	21.1 A		
<b>NEMA Nom. Eff.</b>	1.15	<b>Line-line Res. @ 25°C</b>	0.195 Ω		
<b>Rating - Duty</b>	93.6	<b>Temp. Rise @ Rated Load</b>	53°C		
<b>S.F. Amps</b>	<b>Power Factor</b> 84	<b>Temp. Rise @ S.F. Load</b>	66°C		
	40C AMB-CONT	<b>Locked-rotor Power Factor</b>	27.3		
		<b>Rotor inertia</b>	6.93 LB-FT <sup>2</sup>		

**Load Characteristics 575 V, 60 Hz, 60 HP**

<b>% of Rated Load</b>	<b>25</b>	<b>50</b>	<b>75</b>	<b>100</b>	<b>125</b>	<b>150</b>	<b>S.F.</b>
<b>Power Factor</b>	50	71	80	84	85	84	85
<b>Efficiency</b>	91.5	93.9	94	93.7	92.7	91.6	93.1
<b>Speed</b>	1794	1787	1781	1772	1764	1753	1767
<b>Line amperes</b>	24.9	33.4	44.7	57.3	71.1	87	65.6

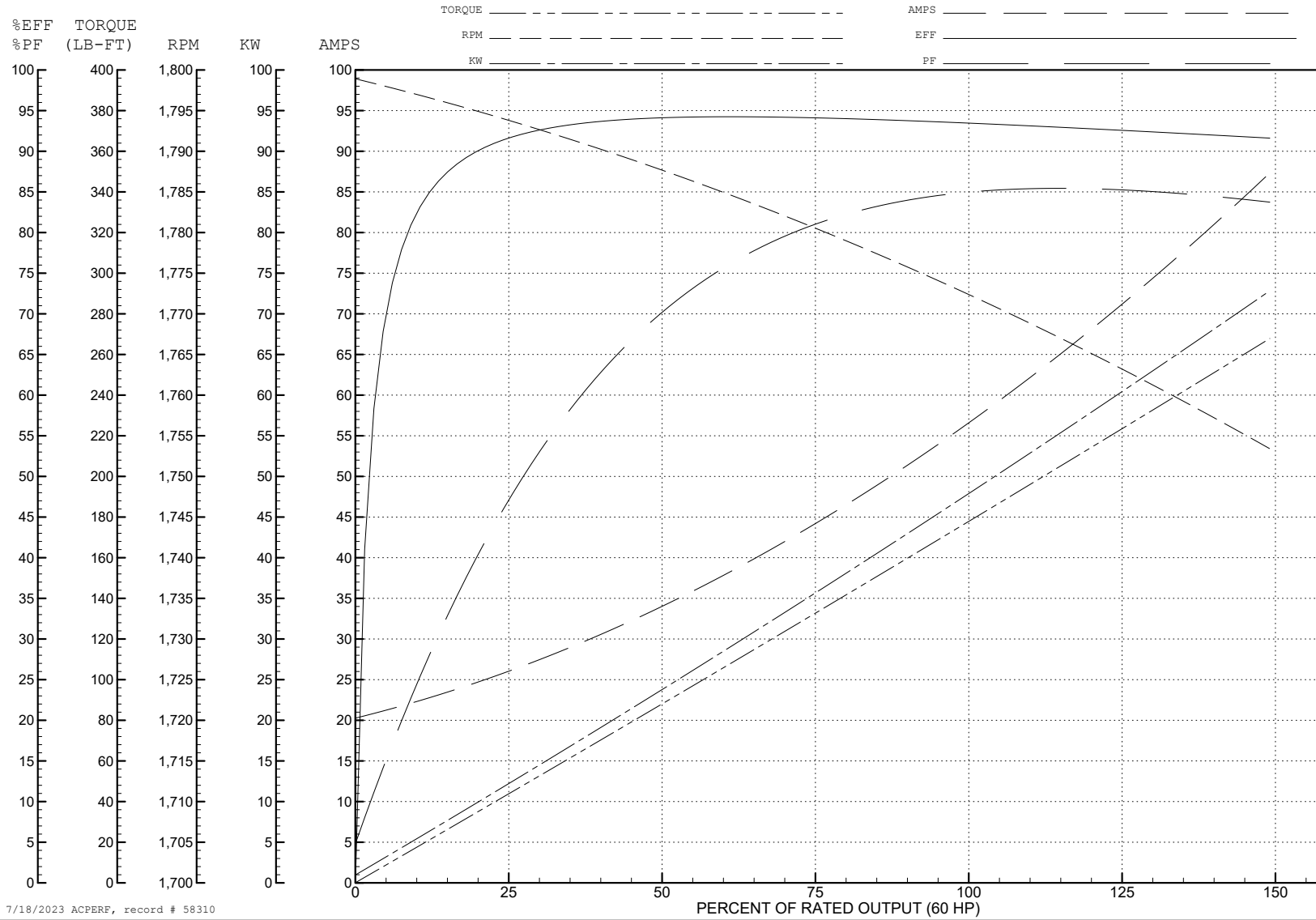
ABB Motors and Mechanical Inc.

WINDING # 42WG102

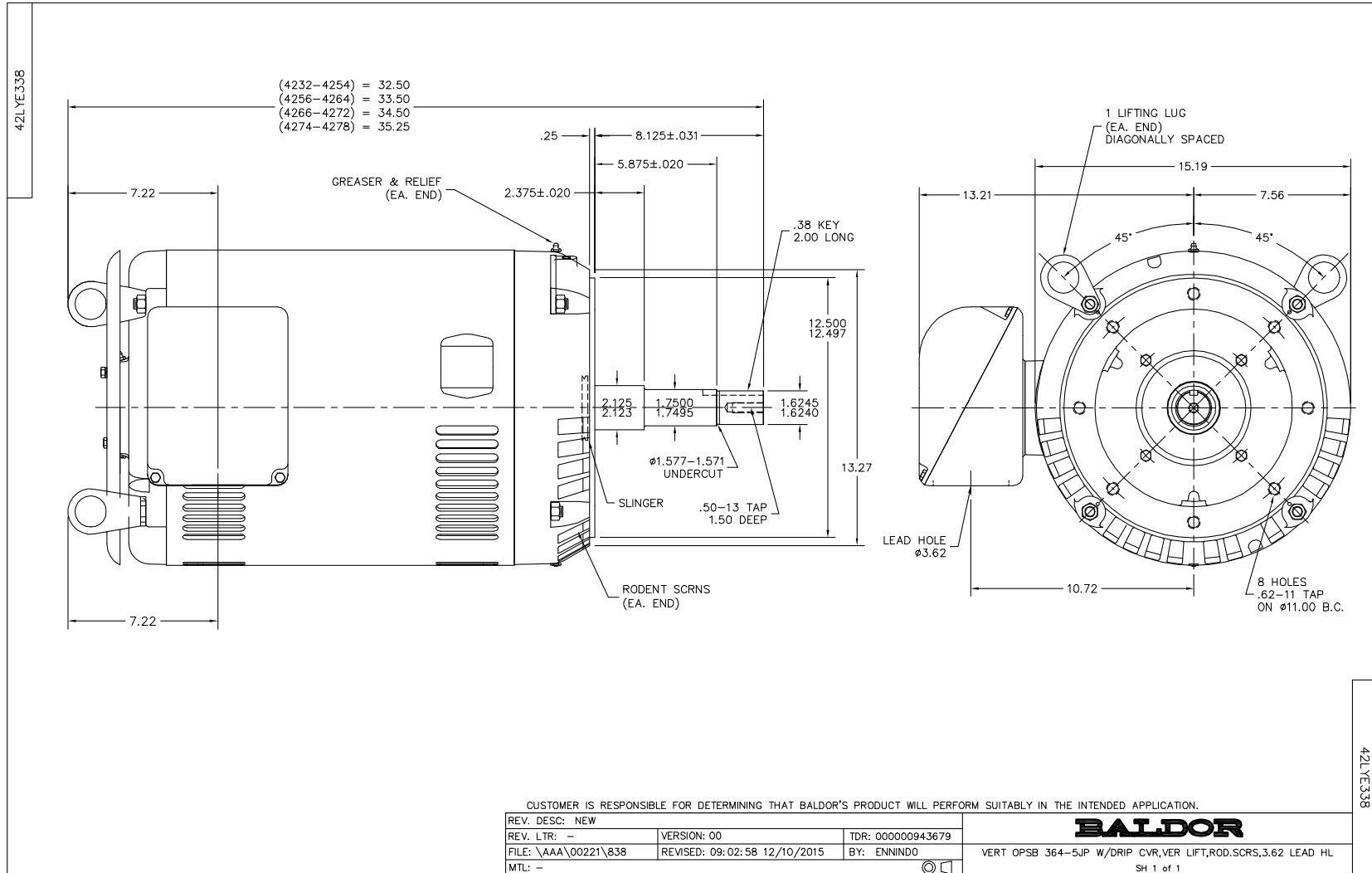
Typical performance - not guaranteed values.

60 HP 3 PH 60 HZ 1770 RPM 575 V 4252M

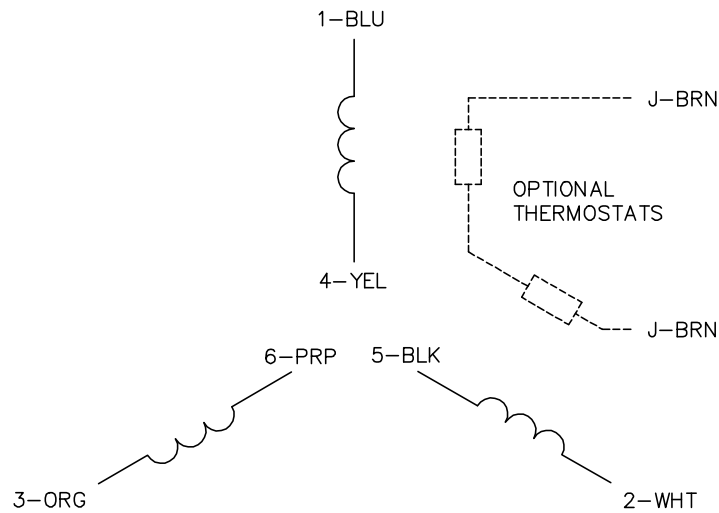
TORQUES (LB-FT): PO=488 PU=221 LR=297 LRA=323



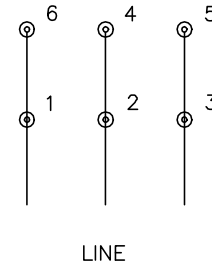
7/18/2023 ACPERF, record # 58310



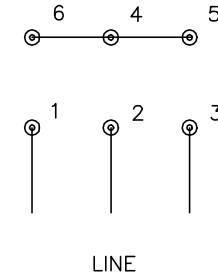
CD0382



RUN CONNECTION  
(1D)



START CONNECTION  
(1Y)



NOTES:

1. INTERCHANGE ANY TWO LINE LEADS TO REVERSE ROTATION.
2. OPTIONAL THERMOSTATS ARE PROVIDED WHEN SPECIFIED.
3. ACTUAL NUMBER OF INTERNAL PARALLEL CIRCUITS MAY BE A MULTIPLE OF THOSE SHOWN ABOVE.
4. LEAD COLORS ARE OPTIONAL. LEADS MUST ALWAYS BE NUMBERED AS SHOWN.
5. FOR ACROSS-THE-LINE STARTING, USE 'RUN' CONNECTION.

CD0382

REV. DESC: ADD CLASS CONN00000007		
REV. LTR: F	VERSION: 01	TDR: 000001099922
FILE: \AAA\00005\243	REVISED: 09:05:32 02/19/2019	BY: ENBRIRO
MTL: -	© □	

**BALDOR - RELIANCE®**

3PH, SV, 6 LEADS, Y START/D RUN

SH 1 of 1